



Vistaweave

connect with the outdoors

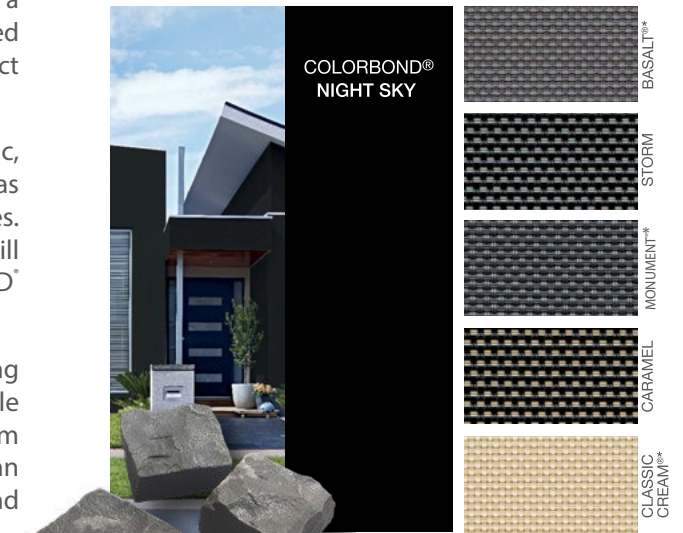
Inspired by
Colorbond®



Vistaweave is inspired by the COLORBOND® steel colour range. The palette coordinates with any exterior to create a seamless finish. This offering caters for traditional colours such as CLASSIC CREAM®, PAPERBARK® and WOODLAND GREY®, right through to the latest contemporary tones such as DUNE®, WALLABY® and MONUMENT®. Whether you want a splash of colour for a contrasting look or a perfect colour-coded match, the Vistaweave range is your perfect solution.

When selecting your screening fabric, consider the colours on your exterior such as the roof, guttering, bricks and other finishes. Every colour in the Vistaweave range will work harmoniously with the COLORBOND® steel exterior palette.

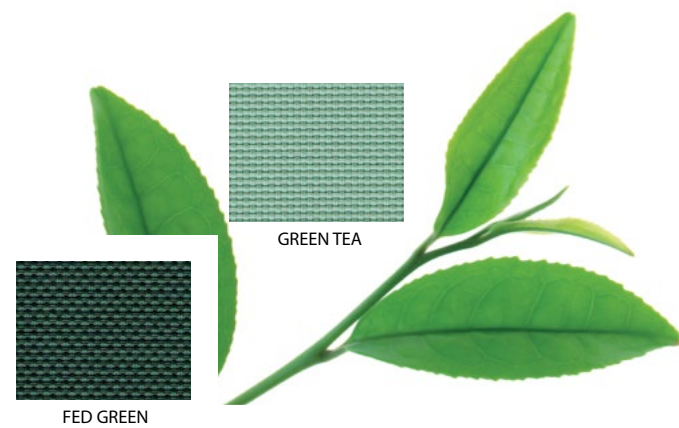
Whether you like a contrasting look using opposing colours, a similar tone for a subtle variation or an exact match for a uniform finish, the Vistaweave colour range can provide endless possibilities. Be creative and transform your outdoors.



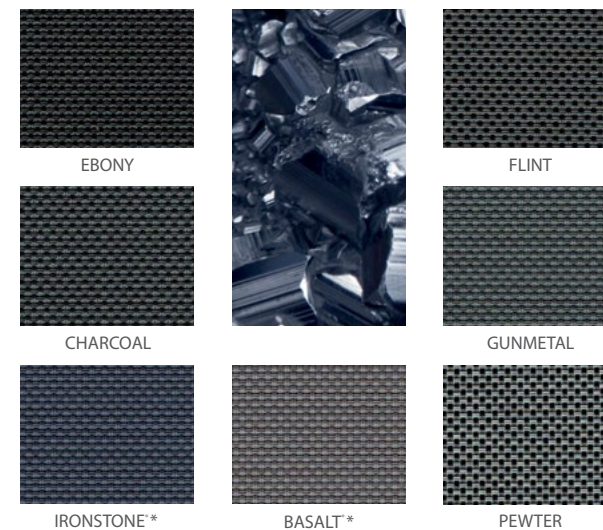
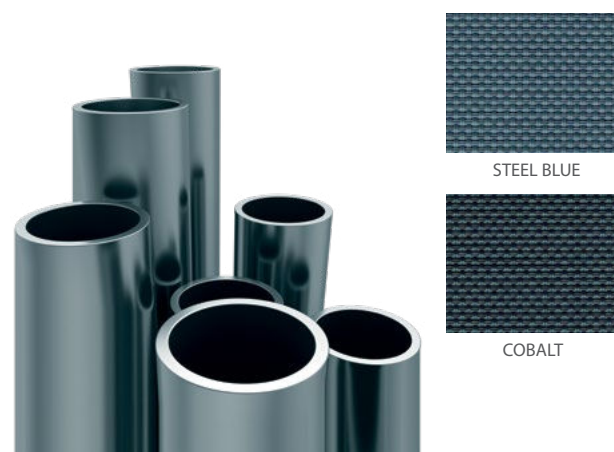
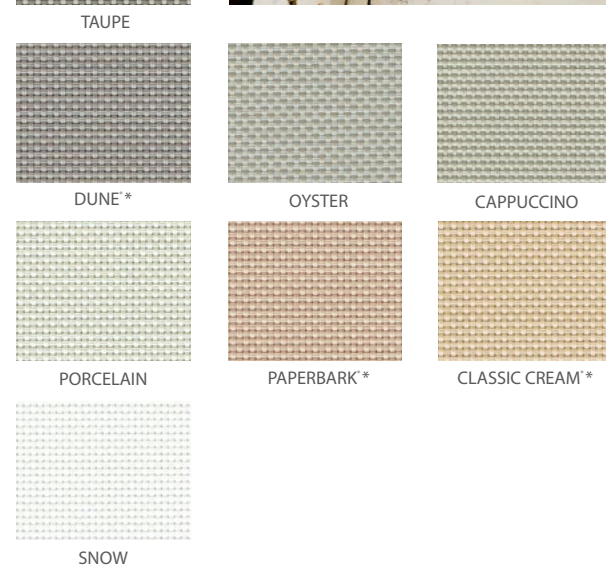
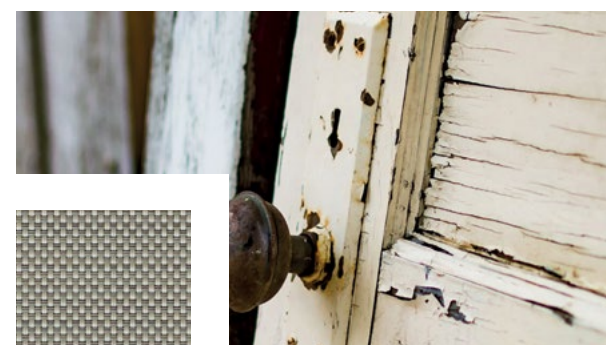
Colorbond®

Vistaweave is inspired by the COLOURBOND® colour range. The palette coordinates with any exterior to create a seamless finish. This offering caters for traditional colours such as CLASSIC CREAM®, PAPERBARK® and WOODLAND GREY® right through to the latest contemporary tones like DUNE®, WALLABY® and MONUMENT®. Whether you want a splash of colour for a contrasting look or a perfect colour-coded match, the Vistaweave range is your perfect solution.

* Inspired by COLORBOND® steel colours.



Vistaweave blinds will create privacy from the outside without compromising the visual aspect.



Vistaweave 95 is a versatile woven mesh designed for blinds, awnings and general outdoor applications. The unique weave combines a functional solution for solar protection with a stylish textured appearance.

Designed for Australian conditions, Vistaweave 95 will create privacy from the outside without compromising the visual aspect.

Reduces heat transmission

Improves air-conditioning efficiencies

Provides UVR protection

Reduces glare in direct sunlight

Provides privacy without compromising the view

Allows moderate flow of fresh air

Mildew and salt water resistant

Supported with a 10 year warranty

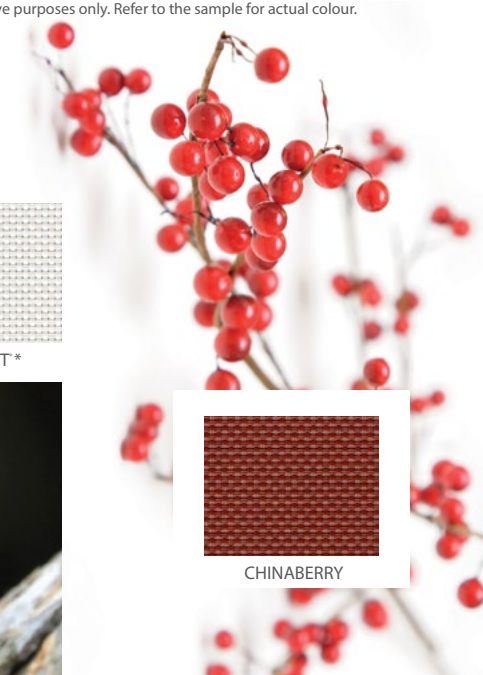
Environmentally friendly

Comprehensive colour offering inspired by COLORBOND[®] steel colours

* Inspired by COLORBOND[®] steel colours

COLORBOND[®], Bluescope, [®] colour names are registered trade marks of BlueScope Steel Limited. [™] colour names are trade marks of BlueScope Steel Limited.

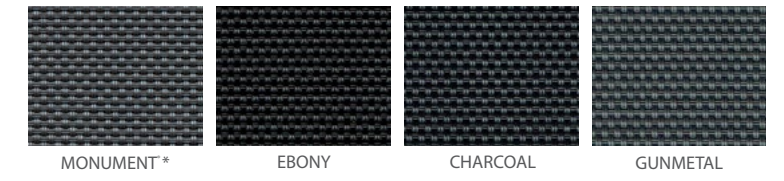
Colours are shown for illustrative purposes only. Refer to the sample for actual colour.



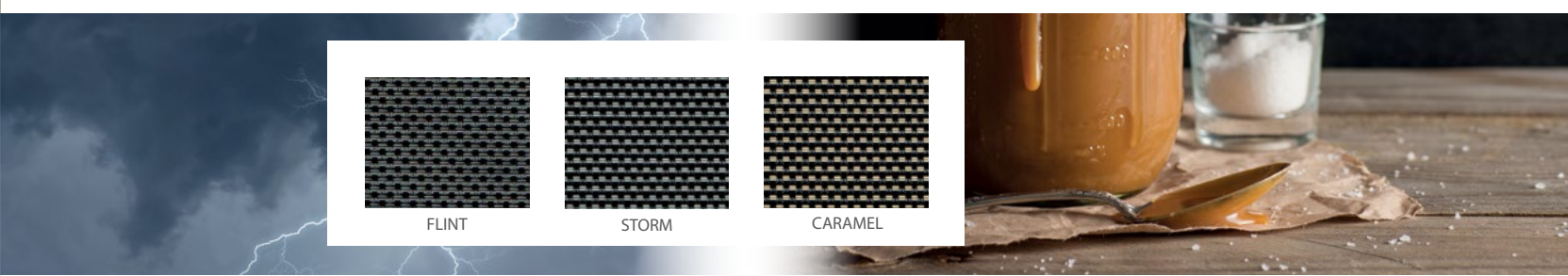


Vistaweave 99 is a heavy duty woven mesh designed for blinds, awnings and general outdoor applications. The high density weave provides exceptional solar protection and visual privacy.

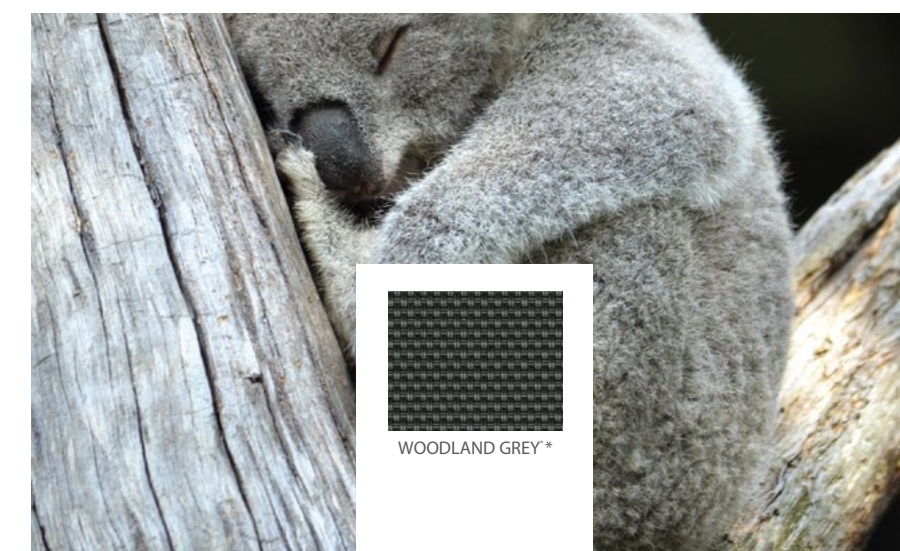
Designed for Australian conditions, Vistaweave 99 will provide a functional solution when privacy screening is paramount.



Exceptional solar protection and visual privacy



- Creates visual privacy screening
- Reduces heat transmission
- Improves air-conditioning efficiencies
- Provides UVR protection
- Eliminates glare in direct sunlight
- Allows moderate flow of fresh air
- Mildew and salt water resistant
- Supported with a ten year warranty
- Environmentally friendly
- Comprehensive colour offering inspired by COLORBOND® steel colours



* Inspired by COLORBOND® steel colours
 COLORBOND®, Bluescope®, colour names are registered trade marks of BlueScope Steel Limited.™ colour names are trade marks of BlueScope Steel Limited.
 Colours are shown for illustrative purposes only. Refer to the sample for actual colour.



Vistaweave MAX

connect with the outdoors

MAX is the latest innovative addition to the Vistaweave range. This exciting collection combines the market renowned benefits of the current outdoor blind mesh, with a tighter weave to provide enhanced privacy, solar protection and resistance to rain.

Designed for Australian conditions, Vistaweave MAX will create a stylish and durable way of maintaining a comfortable outdoor environment.

- Reduces heat transmission
- Improves air-conditioning efficiencies
- Provides UVR protection
- Reduces glare in direct sunlight
- Enhanced privacy
- 2 x 2 weave
- Mildew and salt water resistant
- Supported with a 10 year warranty
- Environmentally friendly
- Comprehensive colour offering inspired by COLORBOND® steel colours

* Inspired by COLORBOND® steel colours
 COLORBOND®, Bluescope,® colour names are registered trade marks of BlueScope Steel Limited.™ colour names are trade marks of BlueScope Steel Limited.
 ABN 16 000 011 058. All rights reserved.
 Colours are shown for illustrative purposes only. Refer to the sample for actual colour.



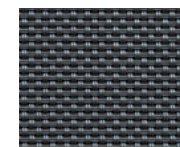
EBONY



CHARCOAL



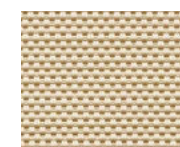
BASALT*



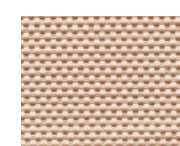
MONUMENT*



WOODLAND GREY*



CLASSIC CREAM*



PAPERBARK*



SNOW





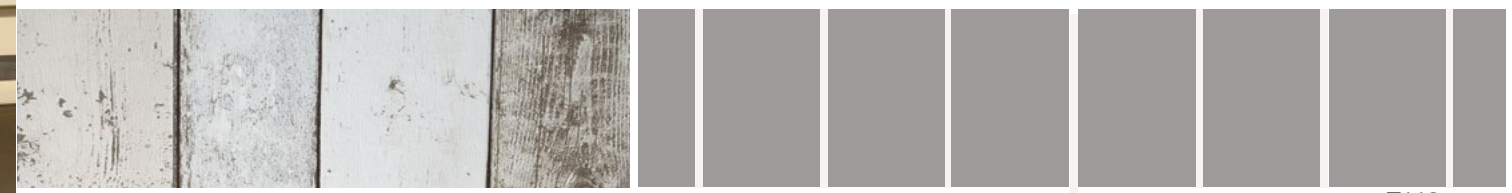
Vistaweave  STRIPE
connect with the outdoors

Vistaweave Stripe is a versatile woven mesh designed for blinds, awnings and general outdoor applications. The selection of traditional and contemporary stripes provide design options for both residential and commercial applications. Vistaweave Stripe will create privacy without compromising the visual aspect.

- | | |
|-----------------------------------|--|
| Reduces heat transmission | Improves air-conditioning efficiencies |
| Provides UVR protection | Eliminates glare in direct sunlight |
| Allows moderate flow of fresh air | Mildew and salt water resistant |
| Supported with a 10 year warranty | Environmentally friendly |



T893



T113



T294



T044



T232



T115

Colours are shown for illustrative purposes only. Refer to the sample for actual colour.



Vistaweave
connect with the outdoors



Nolan Group
Your Textile Partner For Success

blind&awning@nolans.com.au

1300 35 75 85 Nolans.com.au